



DONALD AND BARBARA  
ZUCKER SCHOOL of MEDICINE  
AT HOFSTRA/NORTHWELL®



## OSLER SOCIETY

presents

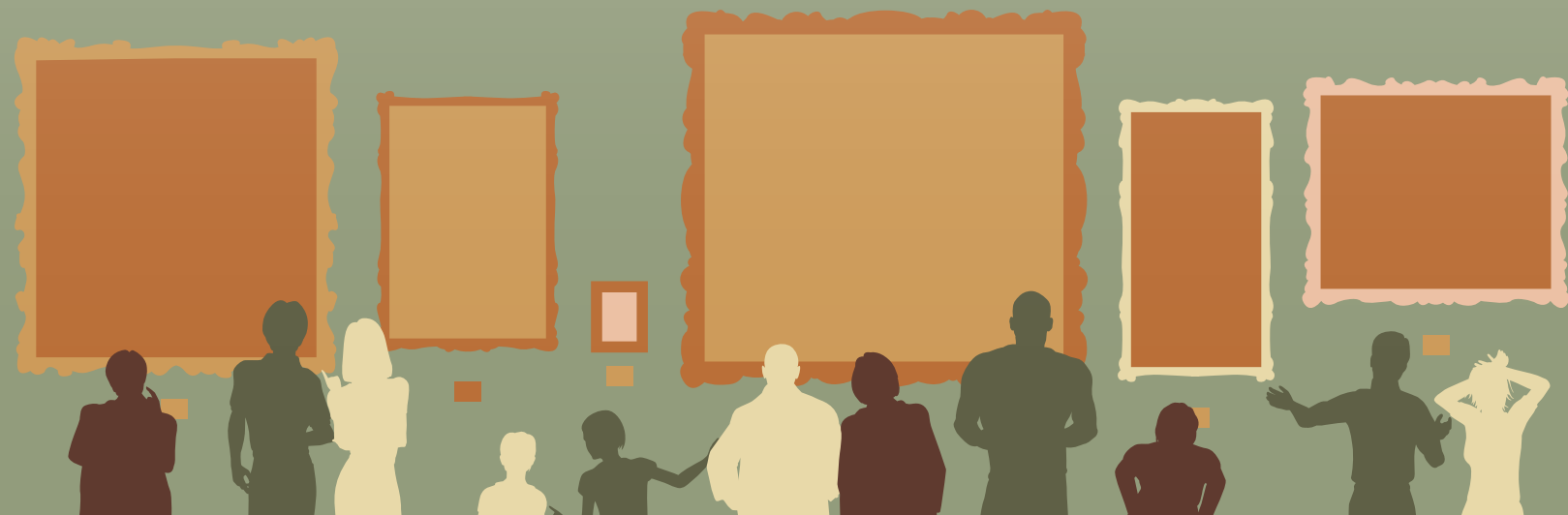
an Online Humanities in Medicine Program

# The Art of Observation and Unconscious Bias

a conversation with

**Nancy Richner, Catherine Bangeranye, PhD**  
and **R. Ellen Pearlman, MD**

By studying art, we explore the unconscious/implicit biases that affect our decisions, choices, and beliefs about race, gender, age, etc. We apply our own experiences, thoughts, and feelings into our interpretations of artwork. What we learn may be at odds with our stated values. Those with different life experiences may interpret the same artwork very differently.



**Nancy Richner, MAT Museum Education**  
Museum Educator and former Director  
of the Hofstra University Museum of Art



**Catherine Bangeranye, PhD**  
Assistant Professor and Assistant Dean,  
Diversity, Equity and Inclusion



**R. Ellen Pearlman, MD**  
Associate Professor and Associate Dean  
for the Advanced Clinical Learning

**Nancy Richner** will guide us through a close examination of several works of art during which we will examine, along with **Dr. Catherine Bangeranye** and **Dr. R. Ellen Pearlman**, how recognizing differences in the way that we and others perceive the same works of art can help us identify and acknowledge our biases, a first step in seeing ourselves and others more clearly.

**Optional: Take an online Implicit Association Test (IAT) before participating in this program.**

Project Implicit is a non-profit organization and international collaborative network of researchers investigating implicit social cognition - thoughts and feelings that are largely outside of conscious awareness and control. The results are confidential to you, and you need not share them at any time, but you might find the results interesting, and may wish to discuss how this exercise made you feel.

[Take IAT](#)

## The Art of Observation and Unconscious Bias, Interactive Exercise, Discussion, and Q&A

**Monday, September 14, 2020**  
**6-8 p.m.**

via Zoom-- register below to receive your Zoom link

**REGISTER FOR THIS EVENT**

88404: 8/20

**For updates on the rescheduling of events and for more information,  
click here to visit our Humanities in Medicine website**