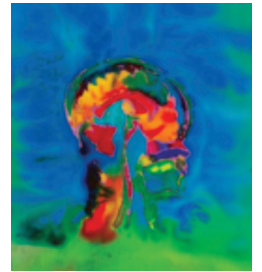




DONALD AND BARBARA
ZUCKER SCHOOL of MEDICINE
AT HOFSTRA/NORTHWELL



Self-Portrait, Elizabeth Jameson

THE OSLER SOCIETY PRESENTS A PROGRAM ON MULTIPLE SCLEROSIS

The Reimagined Brain

“To acknowledge and celebrate the imperfect body is to embrace what it means to be human.”

— Elizabeth Jameson



An art exhibit featuring fine artist Elizabeth Jameson

ENHANCING YOUR KNOWLEDGE OF MULTIPLE SCLEROSIS THROUGH ART AND DIALOGUE

Art Exhibit Reception and Program: Wednesday, December 5, 2018

1 p.m. and 6 p.m., Zucker School of Medicine (W134 and Gallery)

Followed by a presentation and panel discussion featuring artist **Elizabeth Jameson**, **Dr. Joel Stern**, and **Dr. Asaff Harel**. Hear how Ms. Jameson uses art to create provocative images addressing the imperfect brain, and learn from Dr. Stern and Dr. Harel about the latest scientific knowledge and clinical treatments for patients with multiple sclerosis.



ELIZABETH JAMESON, a former public interest lawyer, uses medical technology to create art as a way of taking ownership of her disease. She transforms the often unsettling and clinical black-and-white brain scans into work that invites others to contemplate the beauty of the brain, to discuss what it means to live in an imperfect body, and to stare directly at the imperfect brain's beauty and complexity with curiosity. Jameson has progressive multiple sclerosis and is now a quadriplegic. Through her art, published articles, and speaking engagements around the globe, Jameson challenges others to question what it means to be imperfect — to be human. For more about Elizabeth Jameson, visit <http://www.jamesonfineart.com/>.



JOEL N. H. STERN, PhD, is an associate professor in the Department of Neurology and co-director of the Autoimmune Brain Disorder Research Program at Lenox Hill Hospital; associate professor in the Department of Molecular Medicine at the Feinstein Institute for Medical Research; and associate professor in the Department of Neurology, Surgery, and Science Education at the Donald and Barbara Zucker School of Medicine at Hofstra/Northwell.



ASAFF HAREL, MD, MSc, is a clinical neurologist who heads the multiple sclerosis clinic at the Cushing Neuroscience Institute. He is an assistant professor at the Donald and Barbara Zucker School of Medicine at Hofstra/Northwell, and completed a multiple sclerosis (MS) fellowship at Mount Sinai Hospital funded by the National MS Society. He is actively involved in research, which currently focuses on studying wellness in MS, as well as advanced MRI techniques in monitoring of patients with MS.

The art exhibit will be on display for students and faculty from December 5, 2018, to December 19, 2018.

(Guests are welcome by appointment only; contact SOMOsler@hofstra.edu.)

All are welcome * There is no fee to attend * RSVP: medicine.hofstra.edu/oslerrsvp